

NEW

PENTA MEV

**COMPLYING WITH SYSTEM 3 OF ADF2006
DESIGNED WITH 5 UNIQUE FEATURES**



VENTILATION
AIR CONDITIONING
AIR CLEANING
HEATING



THE MEV SOLUTION

VORT PENTA

The five innovative features designed into the **PENTA** unit ensures regular, controlled ventilation throughout the home.

Continuous movement of air at the approved low levels ensures healthy air for the occupants.

ADVANTAGES:

Protects against the damaging effects of condensation.

Boost speed provides extra control for the occupants.

Self balancing extract outlets ensure optimum performance

Hidden away in a loft or cupboard the unit is ultra quiet.

The performance complies with the requirements of :

England and Wales: Building Regulations Approved Document F

Scotland: **Bre Digest 398**

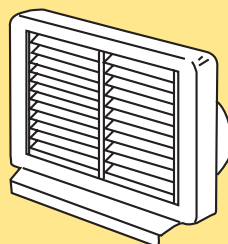


Vivrélec

PENTA MEV



PENTA MEV CODE. 11707



CODE 8223-8226-8229-8232



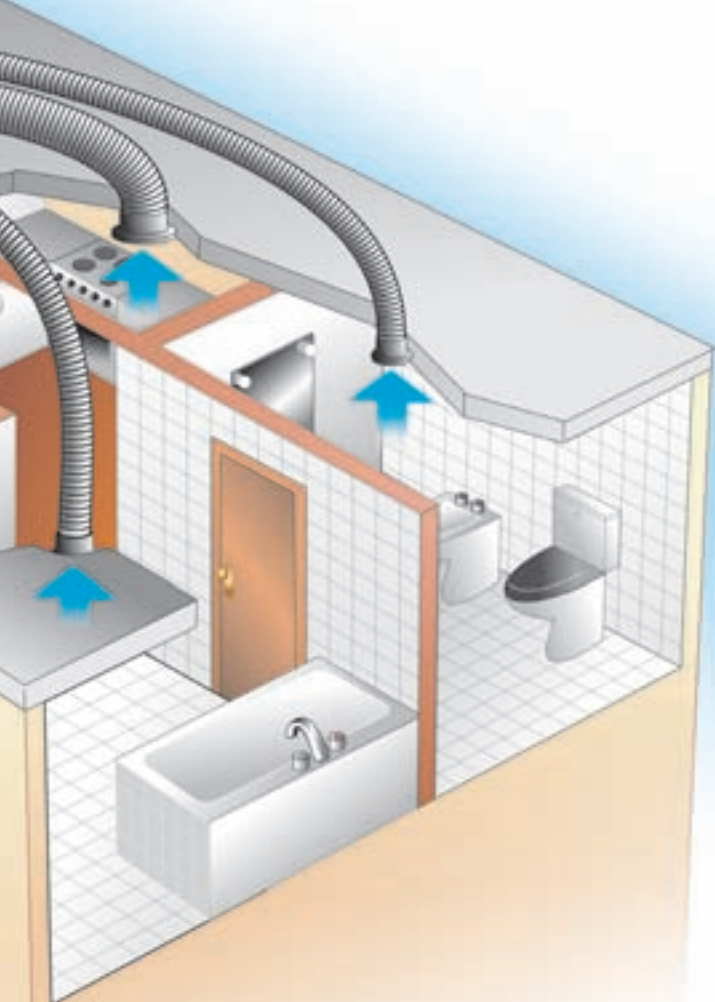
KITCHEN

BATH/
SHOWER/
UTILITY
ROOM



FIXED OUTLETS

BY VORTICE



The 2006 Edition of the U.K Building Regulations Approved Document F1: Means of Ventilation (applicable in England and Wales) has 4 clearly defined systems of ventilation to dwellings. System 3 - Continuous mechanical extract is complied to by the new Vort Penta extract fan, either alone or complemented with other Vortice continuous extract fans.

The Vort Penta continuous mechanical central extract fan provides quiet, uninterrupted extract ventilation from the dwelling via all of the wet rooms, creating a permanent air path through the property from the “dry” habitable rooms to the “wet” non-habitable rooms. Air is usually drawn into the property through background ventilators located in the building façades.

However if the system is being installed to solve an incoming airborne noise issue, background ventilators may be omitted (subject to the proven air tightness of the dwelling).

There is a boost facility on the fan which enables the extract rates from all wet rooms to be increased to counter increased pollutants caused by cooking or bathing activities.

The current Building (Scotland) Regulations refers to continuously operating mechanical extract ventilation in accordance with the guidance in BRE (Building Research Establishment) Digest 398, a paper based on the former Government Department’s (and now private Company) own tests and recommendations, specifically 0.5 Air Changes per Hour throughout the property.

The Vort MEV complies fully with the recommendations contained within this document.

THE FIVE PENTA UNIT



1 Fast, practical, innovative transport and fixing.

Suspended or fixed, the fast fixing sliding base enables the casing to rotate, making the fan very easy to install in any position simply by adjusting its orientation to meet the duct arrangements. This innovative fixing device can also be used as a carrying handle.



2 Versatile: Uniquely extracts from 2 to 6 wet rooms.

The unit is supplied with two regulators as standard and locations for up to 3 additional connections are incorporated into the casing. This means that in addition to the kitchen the PENTA MEV can extract from a remarkable 5 bath/shower/utility rooms.



With 2 regulators



With 3 regulators



3 NEW time saving automatic kitchen flow regulator.

You no longer need to waste time adjusting the flow of the kitchen outlet. When the ducts are fitted the air flow distribution is balanced automatically.

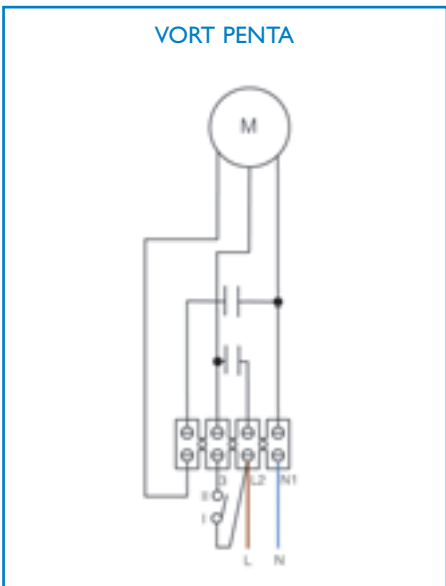


INNOVATIONS



4 Time saving, easy access wiring connections.

Never has the installer had so much room to make electrical connections. Saving time, trouble and money.

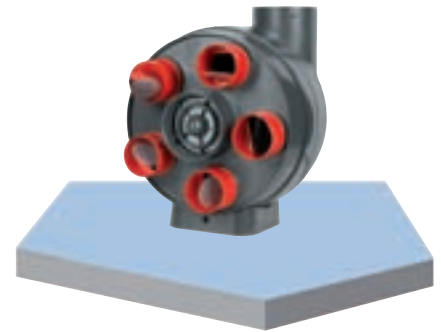


5 Easy 1/4 turn access.

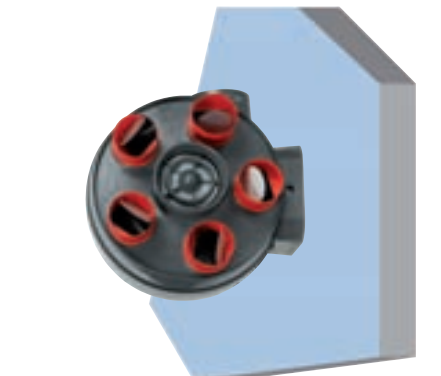
Faster to remove, faster to clean and maintain, the motor section opens and splits into 2 parts with just a quarter turn.. Broken fastening clips are history.



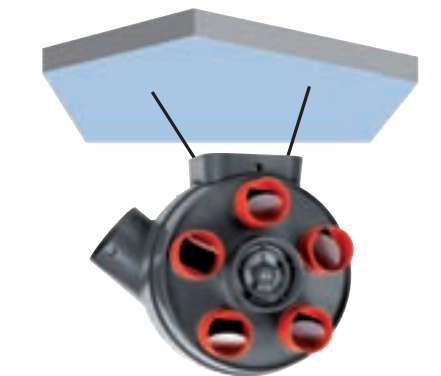
Ceiling mounted installation



Floor mounted installation



Wall mounted installation



Suspended on a the cord supplied



PENTA MEV


UNIVERSAL UNIT Between 2 and 5 bath/shower/utility rooms.

SIMPLE, PROFESSIONAL INSTALLATION

VERY LOW POWER CONSUMPTION 21 Watts (Continuous mode)

VERY QUIET: 32 dB(A) taken at the Kitchen Port

Vivrélec

Model	Code	V ~ 50 Hz	W	Sound levels	Approvals
Penta MEV	11707	230	21/73	Sound level complies with the NRA (new sound regulations)	

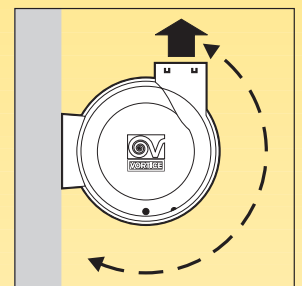
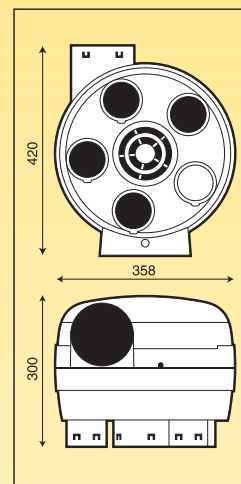
	kitchen (m3/h)	washroom outlet 30m ³ /h
low speed	43 - 60	26 - 40
high speed	≥131	29 - 43

VORT PENTA UNIT Code I 1707

Includes 2 REGULATORS - 30m³/h
1 CORD
4 BLANKS



Dimensions (mm)



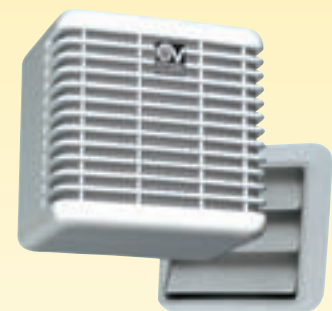
These continuous running fans may also be used to comply with System 3 of ADF2006. It is important that every wet area has continuous mechanical extract.



Ariett Habitat LL 15/30 Code I2000

Ariett Habitat LL 20/75 Code I2001

Wall or ceiling-mounted two speed centrifugal extractor fans with IPX4 protection



Vort Press LL 30/90 Code I2002

Vort Press LL 45/135 Code I2004

Wall or ceiling-mounted centrifugal extractor fans with IPX4 protection

Refer to your Vortice Product Guide for details.

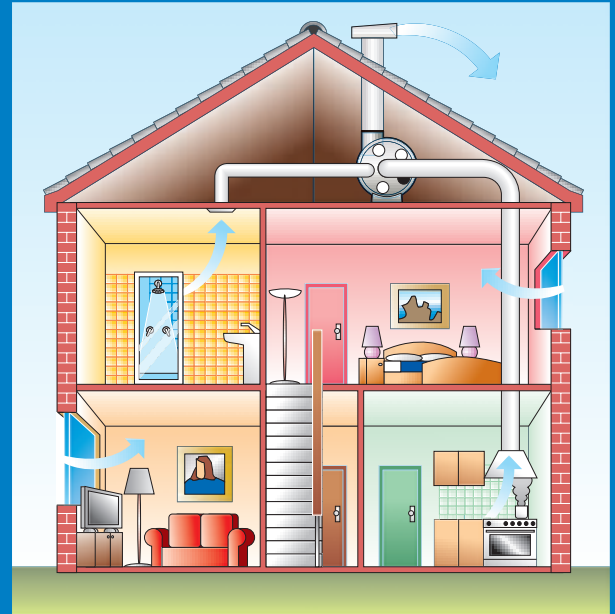
SYSTEM 3

CONTINUOUS MECHANICAL EXTRACT VENTILATION

- Continuously running whole house ventilation system
- Extract points located in all wet rooms
- Background vents located in all habitable rooms
- Central system mounted in loft or cupboard and ducted through to wet rooms.

CONTINUOUS EXTRACT

- 1 Determine the whole building ventilation rate from **Table I.1B**
 - 2 Calculate the whole dwelling air extract rate (continuous) at maximum operation by adding the “minimum high rate” room rates from **Table I.1A**
- The required rates are as follows:
Maximum Rate (Boost) is the greater of 1 or 2 (and should be at least the **Table I.1A** minimum high rate)
 - **Minimum Rate** should be at least the whole building ventilation rate in **Table I.1B**



BACKGROUND VENTILATION

- 1 Controllable background ventilators that have a minimum **2500 mm² equivalent area** should be fitted in all habitable rooms.
- Noisy Sites: Contact Vortice Technical Department for advice.

Table I.1A

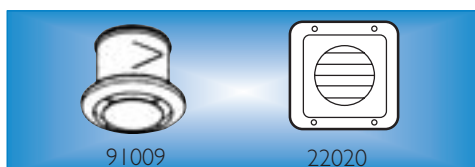
Room	Minimum intermittent extract rate	Continuous rate	
		Minimum high rate	Minimum low rate
Kitchen	30 l/s (adjacent to hob); or 60 l/s elsewhere	13 l/s	Total extract rate must be at least the whole building ventilation rate in Table I.1B
Utility room	30 l/s	8 l/s	
Bathroom	15 l/s	8 l/s	
Sanitary Accomodation	6 l/s		

Table I.1B

	Number of bedrooms in dwelling				
	1	2	3	4	5
Whole building ventilation rate (l/s)	13	17	21	25	29
Minimum value in any dwelling of 0,3 l/s per m ² floor area (b)					

- a. This is based on two occupants in the main bedroom and a single occupant in all other bedrooms. For greater level of occupancy add 4l/s per occupant.
- b. This includes each floor, e.g. for a two storey building, the ground and the first floor areas.

ACCESSORIES



CODE 91008 FIXED EXTRACT GRILLE Ø 80
 CODE 91009 FIXED EXTRACT GRILLE Ø 125
 CODE 22020 FIXED GRILLE Ø 120/150



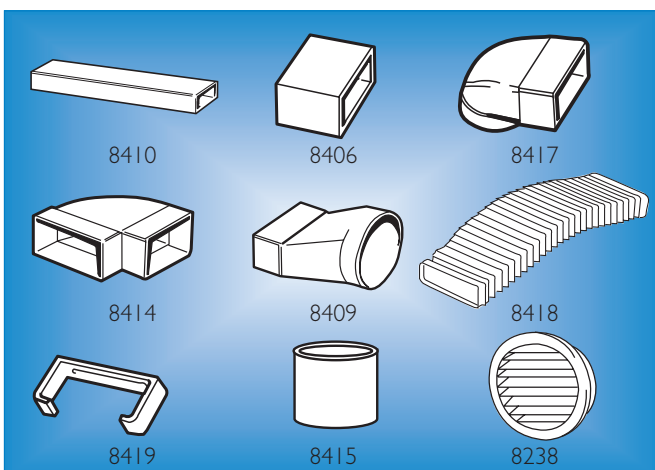
VORTICE FLEXIBLE ALUMINIUM DUCTING

80 mm DIAMETER FLEXIBLE DUCT
 CODE 8201 3 m LENGTH
 CODE 8300 4 m LENGTH
 CODE 8204 10 m LENGTH
 125 mm DIAMETER FLEXIBLE DUCT
 CODE 8203 3 m LENGTH
 CODE 8303 4 m LENGTH
 CODE 8005 10 m LENGTH



INSULATED FLEXIBLE ALUMINIUM DUCT

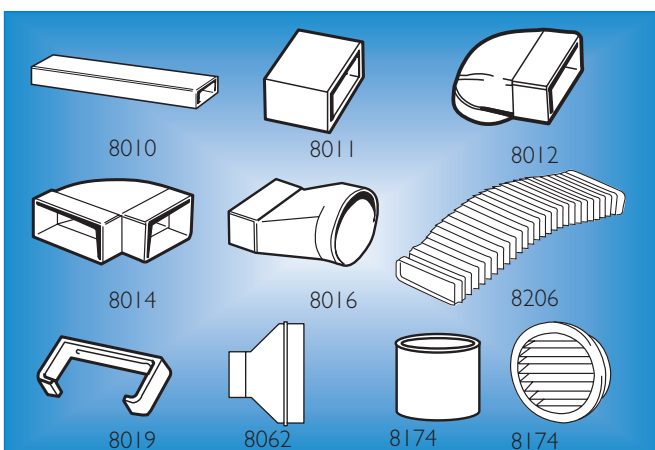
CODE 8330 80 mm DIAMETER INSULATED DUCT
 10 m LENGTH
 CODE 8342 125 mm DIAMETER INSULATED DUCT
 4 m LENGTH
 CODE 8333 125 mm DIAMETER INSULATED DUCT
 10 m LENGTH



VORTICE RIGID MODULAR PLASTIC DUCTING

FD 200 EXTRACT DUCT FOR KITCHENS

CODE 8410 FLAT CHANNEL 1.0 m
 CODE 8416 FLAT CHANNEL 1.5 m
 CODE 8406 CONNECTOR
 CODE 8417 ROUND-SQUARE 90 DEGREE BEND
 CODE 8414 HORIZONTAL 90 DEGREE BEND
 CODE 8420 HORIZONTAL 45 DEGREE BEND
 CODE 8409 ROUND - SQUARE ADAPTOR
 CODE 8418 RECTANGULAR PVC HOSE
 CODE 8419 MOUNTING STRAP
 CODE 8415 CONNECTOR 125 mm
 CODE 8238 125 mm ROUND FIXED GRILLE



FD 100 - FOR OTHER WET ROOMS

CODE 8010 FLAT CHANNEL 1.5 m
 CODE 8011 CONNECTOR
 CODE 8012 ROUND-SQUARE 90 DEGREE BEND
 CODE 8014 HORIZONTAL 90 DEGREE BEND
 CODE 8016 ROUND-SQUARE ADAPTOR
 CODE 8206 RECTANGULAR PVC HOSE
 CODE 8019 MOUNTING STRAP
 CODE 8062 REDUCER 100 mm - 80 mm
 CODE 8174 CONNECTOR 100 mm
 CODE 8234 ROUND FIXED GRILLE 100 mm

cod.5.170.084.291

10/06

Vortice Limited
 Beeches House-Eastern Avenue
 Burton on Trent
 DE13 0BB
 Tel. (+44) 1283-49.29.49
 Fax (+44) 1283-54.41.21
 United Kingdom
 getit@vortice.ltd.uk

Vortice Elettrosociali
 Strada Cerca, 2
 Frazione di Zoate
 20067 Tribiano (Milano)
 Tel. (+39) 02 906991
 Fax (+39) 02 90699314
 Italy
 export@vortice-italy.com

Vortice France
 72, Rue Baratte-Cholet
 94106 Saint Maur
 CEDEX
 Tel. (+33) 01.55.12.50.00
 Fax (+33) 01.55.12.50.01
 France
 contact@vortice-france.com



Features of models are provided as a guide only. Vortice reserves the right to modify its equipment and accessories at any time in order to take advantage of the latest technical innovations.

www.vortice.ltd.uk
 www.vortice.com
 www.vortice-france.com