

Hand dryer

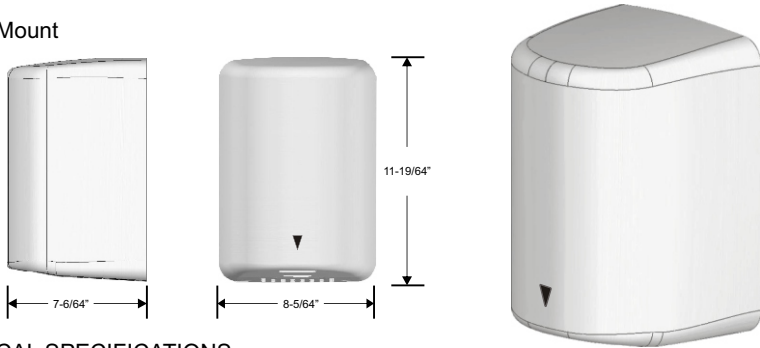
Automatic



HIGH SPEED

Operating Instructions and Parts Manual (Automatic)

Surface Mount



TECHNICAL SPECIFICATIONS

ITEM CATEGORY

PERFORMANCE DATA

Operating Voltage	110-120Vac, 50/60 Hz, 1.34-1.6 kW 220-240Vac, 50/60 Hz, 1.34-1.6 kW
Warm Air Speed Output	168-224 mi/hr (75-100 m/s), adjustable
Air Output Temperature	113°F (45°C) – Ambient Temp. 68°F (20°C)
Dryer Shall Deliver	51-68 CFM (87-116 m ³ /h)
Motor Type	15/16HP, 350-700W, 12000-18000 R.R.M., Adjustable Brush Type, Dual Ball Bearings
Motor Thermal Protection	Auto Resetting Thermostat turns unit off, 120V at 275°F (135°C), 240V at 221°F (95°C)
Heater Element	450-900W, adjustable
Heater Thermal Protection	Auto Resetting Thermostat turns unit off at, 149°F (65°C)
Drying Time	Less than 15 seconds
Stand-by Power	Less than 0.5W
Circuit Operation	Infrared Automatic, self adjusting
Sensor Range	Auto adjust; standard 6" [15 cm±2 cm]
Timing Protection	60 seconds auto shut off
Drip proof	IPX1 ◆
Isolation	CLASS 1
Net Weight	12.8 lbs (5.8 kg)
Shipping Weight	14.6 lbs (6.6 kg)
Unit Size	8-5/64" W x 11-19/64" H x 7-6/64" D [205 mm x 287 mm x 180 mm]

COVER TYPE/ COVER FINISH

- ATC-ZA01: White porcelain enameled coating. (t:1.6 mm)
- ATC-ZA05: Stainless Steel; Satin finished. (t:1.5 mm)
- ATC-ZA05-UB: Stainless Steel; Satin finished without brand. (t:1.5 mm)

General safety information:

⚠ WARNING This product is intended for installation by a qualified service person. Use AWG No. 16 solid conductor for wiring.

⚠ DANGER Failure to properly ground unit could result in severe electrical shock and/or death.

⚠ WARNING Disconnect power at the service breaker before installing or servicing. NOT FOR HOUSEHOLD USE - MAY CAUSE BURNS. " IMPROPRE A L'USAGE DOMESTIQUE - PUET OCCASIONNER."

⚠ WARNING All units must be supplied with a 3-wire service. The ground wire must be connected to the dryer's backplate.

-- NOTE: Do not install dryer over washbasin --

Type Y attachment

If the power supply cord is damaged, it must be replaced by the manufacturer or its service agent or a similar qualified person in order to avoid a hazard.

Means for disconnection must be incorporated in the fixed wiring in accordance with the wiring rules.

Installation

1. Make sure power supply breaker is switched off. Installation must be carried out in accordance with the current edition of the local wiring regulations code having jurisdiction. Installation should be performed only by a qualified electrician.
2. Place template against wall at desired height (see mounting height recommendations) and mark locations of 4 mounting holes and wire service entry at knockout (KO) location.
Note: For two or more dryers, dryers should be no closer than 24 inches (610 mm) on center.
3. Remove and retain 2 cover screws and cover.
4. Connect supply wires to terminal block where indicated and connect ground wire to base plate with ground screw

Connections :

- A. Connect the live wire (colored red or brown) to the terminal block marked "L".
- B. Connect the neutral wire (colored black or blue) to the terminal block marked "N".
- C. Connect the ground wire (colored green or green and yellow) to the green screw marked "⊕".

Note that colors of live and neutral wires depend on voltage of supply service.

5. Replace cover. Do not over-tighten screws.

Recommended mounting heights

- from bottom edge of dryer above finished floor (AFF)

Men's	43"	109 cm
Ladies	41"	104 cm
Children, ages 11-17	39"	99 cm
Children, ages 3-10	33"	84 cm
Handicapped	35"	89 cm

Cleaning and Maintenance

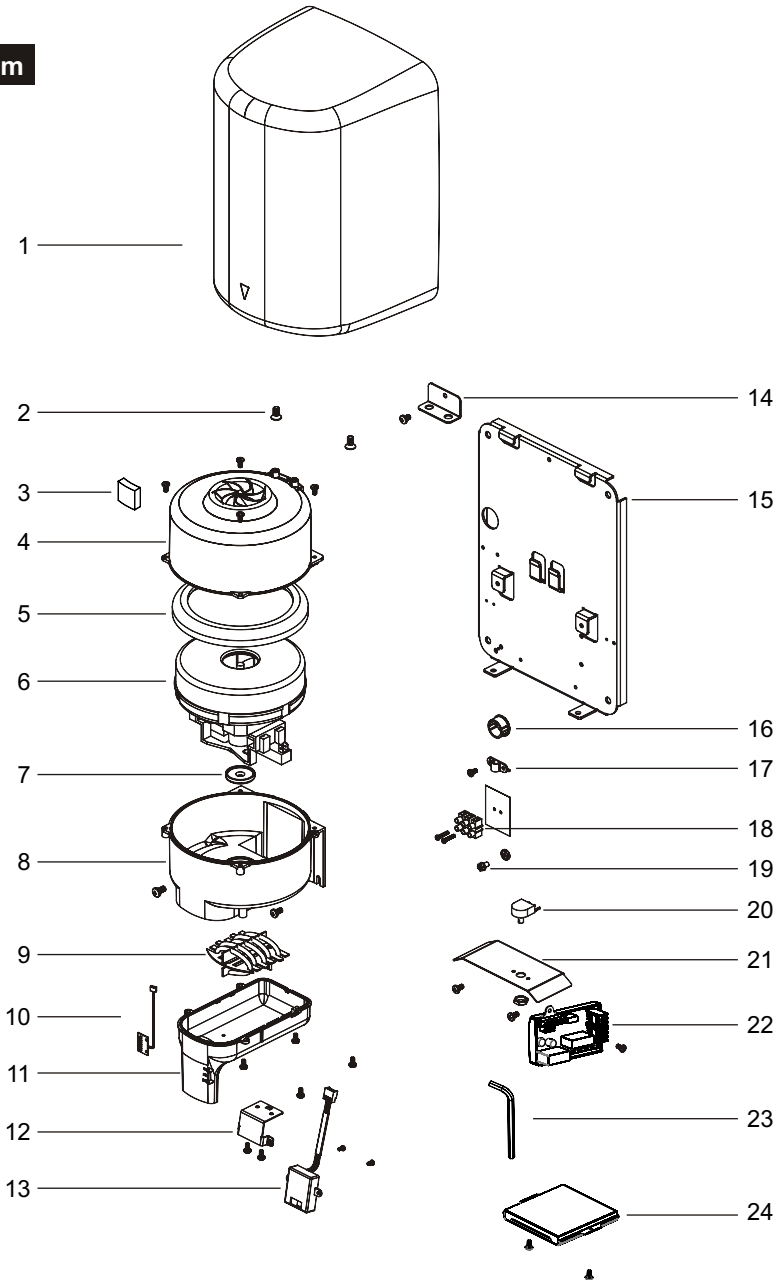
Periodic cleaning of the unit is recommended to ensure optimum performance.

- Disconnect the electrical supply.
- Remove the two cover-mounting screws.
- Remove the cover.
- Clean all dust lint from the interior of the dryer.
- Wipe the cover with a damp cloth and mild cleaning solution. Do not Soak. Never use abrasives to clean the cover.
- Replace the cover. Do not over tighten the screws.

**Operation**

- No-touch operation
- Shake excess water from hands.
- Place hands under the outlet to start operation.
- Rub hands lightly and rapidly.
- Stops automatically after hands are removed.

Diagram



Repair parts list

Key	Description
1	Steel - White porcelain enameled Stainless Steel - Satin finish Stainless Steel - Satin finish (without brand)
2	Security hex screw (2 reqd.)
3	Shock absorber
4	Blower housing - Top
5	Motor rubber - Large
6	Motor 110-120Vac 700W (US-Spec) Motor 220-240Vac 700W (US-Spec) Motor 220-240Vac 700W (EURO-Spec)
7	Motor rubber - Small
8	Blower housing - Bottom
9	Heater element 120Vac 900W Heater element 240Vac 900W
10	LED assembly
11	Air outlet
12	Sensor bracket
13	Sensor module
14	Blower housing bracket
15	Base plate
16	Nylon hole bushing
17	Cable clamp
18	Terminal block
19	Grounding screw
20	VR (variable resistance) 50K - 110-120Vac VR (variable resistance) 50K - 220-240Vac
21	VR bracket
22	Circuit Board Module - 110-120Vac Circuit Board Module - 220-240Vac
23	Security hex wrench
24	Filter assembly

WARRANTY

atc Electrical & Mechanical provides a limited 5-year parts and Return to Base repair warranty for the Panther hand dryer as long as the following conditions are followed:

1. Installation and use of the Panther hand dryer is in accordance with the instruction manual that is packaged with each hand dryer.

In order to arrange parts under warranty for the hand dryer the following information is required.

Receipt number: _____

Serial number of the Hand Dryer: _____

Date of Manufacture: _____

Date of Purchase: _____

For Sales and Service enquiries please contact **atc on the numbers below.**



atc House,
Broomhill Drive
Tallaght
Dublin 24
IRELAND

PH 003531 4625111
FX 003531 4520887
Email: sales@atc.ie

www.atc.ie



Environmental Protection

Waste electrical products should not be disposed of with household waste, please recycle this product where the facilities exist. Please check with your local authority.