

atc Puma High Speed Hand Dryer

**Low Energy 500watt
Compact Design**





atc Puma High Speed Hand Dryer

The Smallest High Speed Hand Dryer in the World

Low
Watt Hand
Dryer

DESCRIPTION

Product Code	Z-2000 M
Cover Material	Stainless Steel
Finish	Matt Stainless Steel
Warranty	2 Years
Activation	Automatic

ELECTRICAL SPECIFICATIONS

Voltage	220 - 240Vac
Frequency (Hz)	50 / 60Hz
Brush Motor with Dual Ball Bearings	25000 rpm
Power Output (adjustable)	1150-500W
Motor Power	500W
Heating Power (adjustable)	650W / Off
Sensor	250mm Fixed
Drying Time	15 Seconds
Air Flow m/s	60m/s

NOISE LEVEL	70db at 1m
--------------------	------------

APPROVALS

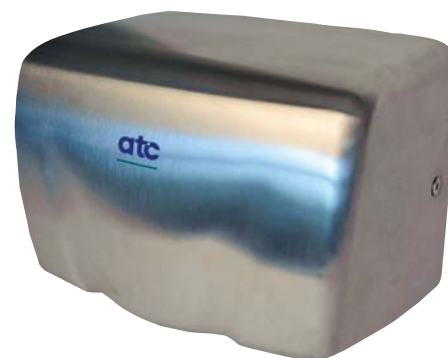


SAFETY FEATURES

Motor Thermal Protection	Turns unit off at 100°C
Heater Thermal Protection	Turns unit off at 100°C
Time Protection	45s Auto Shut Off
Cover Screws	Vandal Resistant
Protection	IPX1

SIZE AND WEIGHT

Width	250mm
Height	175mm
Depth	152mm
Weight	3.0kg



Energy Efficient
Low Running Costs
500 Watts Economy
1150 Watts Maximum

High Performance
Dries Hands in 15
Seconds
2 Year Warranty

**UV Light to Reduce
Bacteria build up**

Energy Saving Feature
The heating element
can be turned off in the
Puma, via a switch under
the cover, which reduces
the power usage from
1150W to 500W

Note: All calculations assume a supply Voltage of 230V



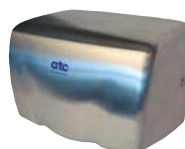
SEE ENERGY COST COMPARISON ON PAGE 23

Energy Cost Comparison atc Puma

Conventional Hand Dryer vs atc Puma



CONVENTIONAL HAND DRYER	
Number of Days	312
Number of Dries per Day	200
Electrical Cost Kwh	0.14p
Hand Dryer Wattage	2400
Drying Time	40 seconds
Annual Energy Cost	£239.12



PUMA	
Number of Days	312
Number of Dries per Day	200
Electrical Cost Kwh	0.14p
Hand Dryer Wattage	1150
Drying Time	15 seconds
Annual Energy Cost	£42.97

SAVINGS
PER YEAR
£196.15



Paper Towel vs atc Puma



PAPER TOWELS	
Number of Days	312
Number of Dries per Day	200
No of Towels per Dispenser	200
No of Towels per Dry	2
Cost per Towel Sheet	0.01p
Annual Cost of Towels	£1,248.00



PUMA	
Number of Days	312
Number of Dries per Day	200
Electrical Cost Kwh	0.14p
Hand Dryer Wattage	1150
Drying Time	15 seconds
Annual Energy Cost	£42.97

SAVINGS
PER YEAR
£1205.00



CO₂ Emission Comparison

↑

CO₂ Per Dry (g) 11.81g
Annual CO₂ Emissions 737Kg

CONVENTIONAL DRYER

atc PUMA

CO₂ Per Dry (g) 2.12g
Annual CO₂ Emissions 132Kg

↓

↑

CO₂ Per Dry (g) 12.60g
Annual CO₂ Emissions 786Kg

PAPER TOWELS

