



# Lineo Mixed Flow In-Line Fans

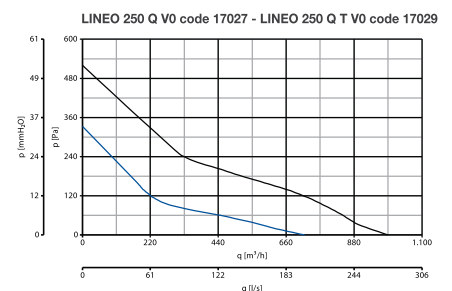
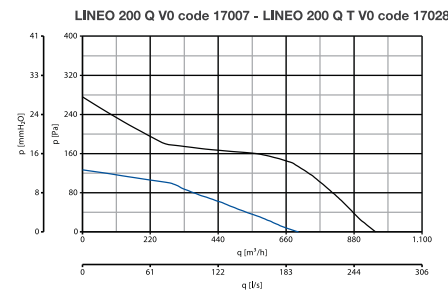
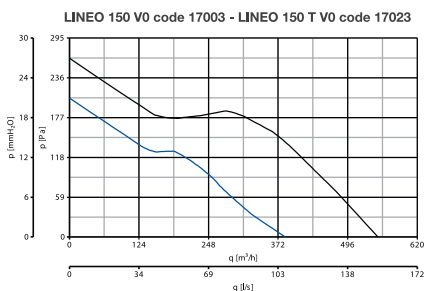
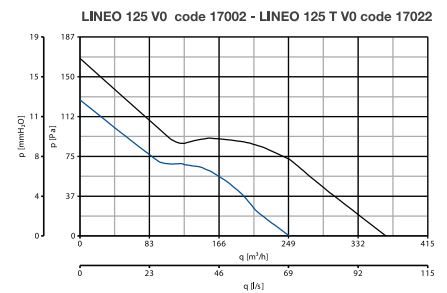
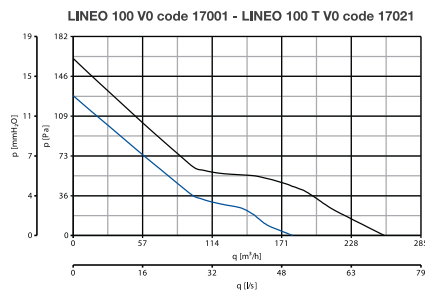
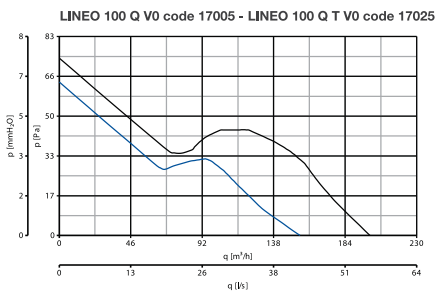
The Lineo mixed flow in-line fans are ideal for duct mounted ventilation systems requiring high pressure, good air flow and low noise levels. These fans are silent running and have compact overall dimensions. The fans are two speed and are available with adjustable timer. The Lineo range is splash proof IPX4, double insulated and are eco friendly

## TECHNICAL SPECIFICATIONS

- 11 model sizes stocked – 100mm, 150mm, 200mm, 250mm, 315mm
- Available with or without timer
- Ball bearing motors for long life
- Low noise (third part certified)
- Low power consumption yet excellent airflow.
- Compact overall dimensions
- Two speed
- Speed adjustable using optional controller
- Mounting bracket included
- Self-extinguishing VO Plastic
- IPX4 splash proof protection on all models.
- IMQ data label ensures data and performance is third party certified.
- Conforms to international standards: CEI EN 61 – 28 standards.
- Eco-Friendly: Recyclable materials have been used and the “Design for Disassembly” technique has been followed (2002/96/EC-WEE)



## Pressure/Performance Curves



*Pressure/Performance Curves are for single fan operation.  
Pressure/Performance Curves for in parallel and in series operation available from Sales Office.*



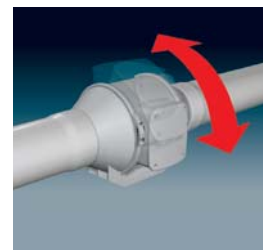
# Lineo Mixed Flow In-Line Fans

The Lineo mixed flow in-line fans are ideal for duct mounted ventilation systems requiring high pressure, good air flow and low noise levels. These fans are silent running and have compact overall dimensions. The fans are two speed and are available with adjustable timer. The Lineo range is splash proof IPX4, double insulated and are eco friendly

**Lineo Range** **LONG LIFE 30.000h**

CODE	LINEO IN-LINE MIXED FLOW FANS	BOX QTY
17005	4" MIXED FLOW FAN (155 <sup>①</sup> /200 <sup>②</sup> m <sup>3</sup> h) (43.1/55.6 l/s) (quiet operation) (12/15WATTS)	4
17025	4" MIXED FLOW FAN c/w (155 <sup>①</sup> /200 <sup>②</sup> m <sup>3</sup> h) (quiet operation) (43.1/55.6 l/s) (12/15WATTS) <b>TIMER</b>	4
17001	4" MIXED FLOW FAN (180 <sup>①</sup> /255 <sup>②</sup> m <sup>3</sup> h) (50/70.8 l/s) (20/23WATTS)	4
17021	4" MIXED FLOW FAN c/w (180 <sup>①</sup> /255 <sup>②</sup> m <sup>3</sup> h) (50/70.8 l/s) (20/23WATTS) <b>TIMER</b>	4
17002	5" MIXED FLOW FAN (250 <sup>①</sup> /365 <sup>②</sup> m <sup>3</sup> h) (69.4/101.4 l/s) (25/33WATTS)	1
17022	5" MIXED FLOW FAN (250 <sup>①</sup> /365 <sup>②</sup> m <sup>3</sup> h) (69.4/101.4 l/s) (25/33WATTS) <b>TIMER</b>	1
17003	6" MIXED FLOW FAN (385 <sup>①</sup> /550 <sup>②</sup> m <sup>3</sup> h) (106.9/152.8 l/s)	2
17023	6" MIXED FLOW FAN c/w <b>TIMER</b> (385 <sup>①</sup> /550 <sup>②</sup> m <sup>3</sup> h) (106.9/152.8 l/s)	2
17007	8" MIXED FLOW FAN (700 <sup>①</sup> /950 <sup>②</sup> m <sup>3</sup> h) 194.4/263.9 l/s (quiet operation)	1
17028	8" MIXED FLOW FAN c/w <b>TIMER</b> (700 <sup>①</sup> /950 <sup>②</sup> m <sup>3</sup> h) 194.4/263.9 l/s (quiet operation)	1
17029	10" MIXED FLOW FAN (720 <sup>①</sup> /990 <sup>②</sup> m <sup>3</sup> h) (200/275 l/s) (quiet operation) <b>TIMER</b>	1

① Min. Speed ② Max. Speed



## Dimensions (mm)

Models	A	B	C	Ø D	E	F	G	L	Kg
VORTICE LINEO 100 Q V0	156	174	231	96	82	152	95	47.5	1.25
VORTICE LINEO 100 Q T V0									
VORTICE LINEO 100 V0	188.5	211	303	96	101.5	189	90	80	1.8
VORTICE LINEO 100 T V0									
VORTICE LINEO 125 V0	188.5	211	258	122	101.5	189	90	80	1.8
VORTICE LINEO 125 T V0									
VORTICE LINEO 150 V0	214.5	234	294	146	112.5	212	110	80	2.4
VORTICE LINEO 150 T V0									
VORTICE LINEO 160 V0	214.5	234	272.5	156	112.5	212	110	80	2.4
VORTICE LINEO 160 T V0									
VORTICE LINEO 200 Q V0	234.5	260.5	300	196	125.5	235	140	100	4.3
VORTICE LINEO 200 Q T V0									
VORTICE LINEO 250 Q V0	300	317	385	247	152.5	292	176.5	145	5.8
VORTICE LINEO 250 Q T V0									
VORTICE LINEO 315 V0	361.5	394.5	448	312	188.5	359	220.5	182	11.3

Dimensions (mm)

