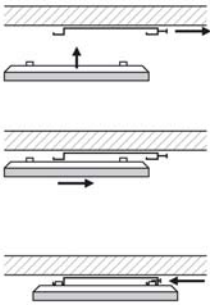


ECOSUN LOW TEMPERATURE RADIANT HEATING PANELS

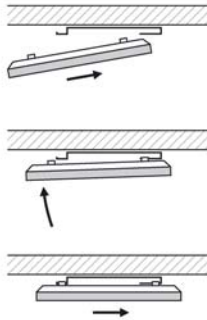
INSTALLATION

For ceiling installation only

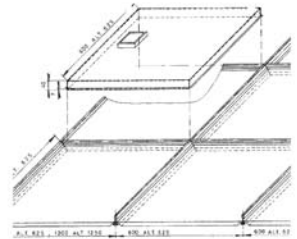
IKP, IN, IN-2



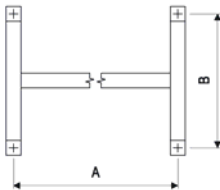
U



C und U



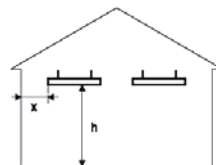
FIXING FRAME



Platte	A (mm)	B(mm)
300U	340	280
600U, 700U	935	280
700IKP, IN, IN-2		

MINIMUM DISTANCES*

300-600W	h = 2,5m	x = 0,6m
700W	h = 2,7m	x = 1,2m



* Not applicable to industrial and agricultural applications. The distances must be observed in areas where people stay for a long time.

1.1 Type: Ecosun 300U, 600U, 700U, 900U (IP44)

Use: Flats, offices, schools, hospitals, shops, industry and agricultural premises, etc.

Fixing: Preferentially, fix the panel in a horizontal position to a ceiling with a fixing frame or suspend it on chains or cables. The panels can be installed on flammable materials. The distance of front and side walls of the panel from flammable objects must be at least 10 cm. Panel dimensions are typified for inserting the panels in cassette lower ceilings.

Installation: When mounting is carried out by means of a fixing frame, mark fixing points and fasten the frame with dowels to the ceiling or ceiling construction. Connect the supply lead to the network in accordance with colour marking of conductors. When putting the panel on the fixing frame, first push the panel partially (approx. 10 mm) on the rear shaped ends of frame girders and then incline the panel to the ceiling or ceiling construction so that the front catches may be pushed horizontally on the frame girders. When installing the panel on chains or cables, fix the chains or cables to four catches with \bar{R} 6 mm holes by means of snap-hooks or similar fixtures.

1.2 Type: Ecosun 300c, 600c (IP20)

Use: In cassette lower ceilings 600×600, 600×1200 (Thermatex, Rockfon, Armstrong).

Installation: To a lower ceiling grid of respective dimensions. Connect to the box situated on the rear side of the panel.

1.3 Type: Ecosun 700IKP (IP54), 700IN (IP65), 700IN-2 (Ex e II T3) (750IKP, 750IN, 750IN-2)

Use: Mainly in industrial and agricultural premises.

Fixing: To be suspended on chains or cables under the ceiling construction, or fixed with a fixing frame right to the ceiling. Should the ceiling construction be flammable, keep at least a 5 cm distance of the panel from the ceiling. The distance of flammable objects from the front and side walls of the panel must be at least 10 cm.

Installation: Connect chains or cables to four catches with \bar{R} 6 mm holes. In case the fixing frame is used (which is not a part of the panel), it is necessary to:

- Mark fixing points and fix the frame with dowels to the ceiling or ceiling construction;
- Connect the supply lead to the network in accordance with colour marking of conductors;
- Push the panel catches in shaped ends of frame girders;
- Insert a guard of actuating current \leq 30 mA to the 700IN-2 supply lead.

2.1 Warning

- Ambient temperature (i.e. temperature of air in the room where the radiator is situated) must not exceed 30 °C!
- Supply lead must be fitted with a disconnecting device and the distance of disconnected contacts must be at least 3 mm at each pole.
- Damaged supply lead must be replaced by the manufacturer or a serviceman.
- Use countersunk screws to install fixing frames.
- Type model number indicates input (300 = 300 W).
- Use gloves for handling not to pollute the front radiating panel surface.

Ecosun panels are not intended for areas where water vapour or dampness containing salt, cleaning agents, etc. occurs, as such conditions speed up the corrosion of metal parts. Examples of unsuitable locations for installation: in a car wash – including areas with technical equipment, at water treatment and cleaning plants, by the sea, etc.

This appliance can be used by children from the age of 8 and persons with lower physical, sensory or mental abilities or a lack of experience or knowledge providing they are under supervision or have been trained in the use of the appliance in a safe manner and understand the possible danger. Children may not play with the appliance. Cleaning and maintenance by the user must not be carried out by children without supervision.

Children under 3 years of age should be prevented from accessing the appliance, unless they are constantly supervised. Children from 3 to 8 years of age may switch the appliance on/off only if it is placed or installed in its intended standard operating position and if they are under supervision or have been instructed in the safe use of the appliance and if they understand the possible danger. Children from 3 to 8 years of age mustn't insert the plug into the socket, control or clean the appliance or carry out maintenance that is to be done by the user.

Warranty

24 months from the date of sale. The warranty does not cover faults caused during transportation, unsuitable storage or unqualified installation.

You can find the current and full warranty conditions at www.atc.ie

WARNING – Some parts of this product may become very hot and cause burns. Special attention must be paid to this fact in the presence of children and handicapped persons.

Date of sale:.....

Production number:.....

Retailer:.....

