



## Level Probe Cleaning Instructions

### **Step 1**

Disconnect the power supply to KwikBoil unit.



### **Step 2**

Remove the screws on the side of the KwikBoil unit.



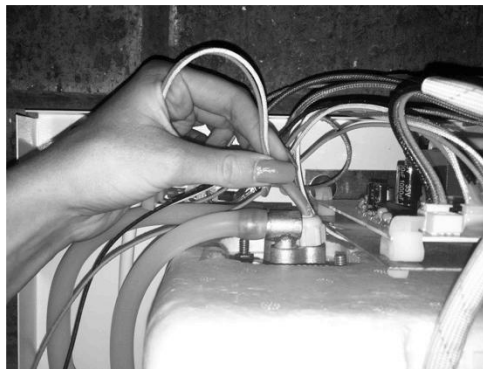
### **Step 3**

Remove the front cover from the KwikBoil unit.



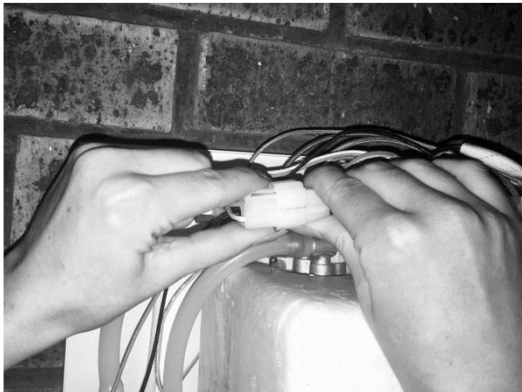
### **Step 4**

Locate the Level Probe on the top of the tank. (It has red and white wires)



### **Step 5**

Trace the wires to the connecting plugs. Press down the clip and separate the plugs.



### **Step 6**

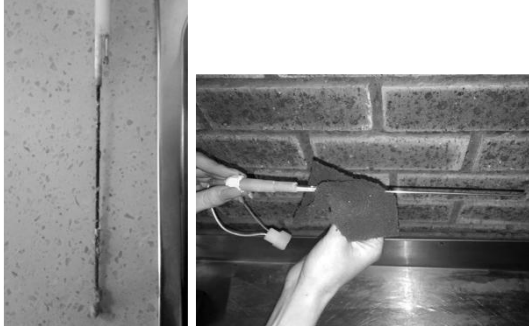
Pull the Level Probe upwards out of the tank. (The Level Probe is not fixed or screwed in, it simply pulls out.)



**Step 7**

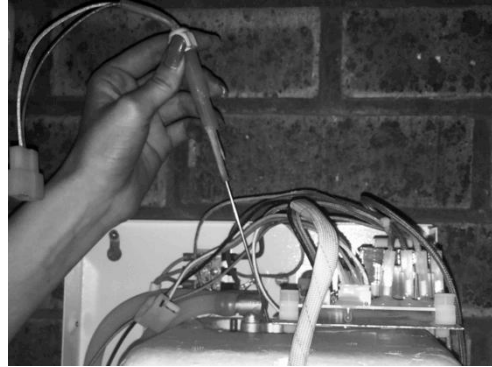
Assess the condition of the Level Probe. If it is scaled up, remove the scale by either scraping it off or by using a Scotchbrite sponge. All the scale must be removed completely until all the metal of the Level Probe is exposed.

(PLEASE NOTE: Be cautious not to damage the silicon housing at the top of the Level Probe)



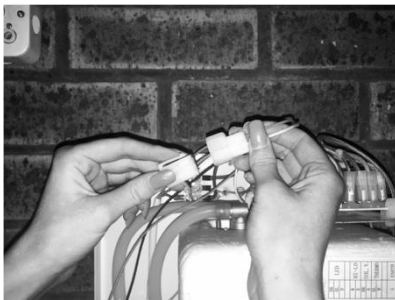
**Step 8**

Place the Level Probe back into the top of the KwikBoil tank.



**Step 9**

Reconnect the Level Probe wiring by inserting the male and female plugs into one another.



**Step 10**

Replace the KwikBoil cover onto the unit.



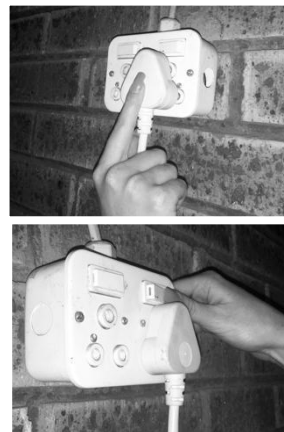
**Step 11**

Fasten the cover to the body of the KwikBoil unit by replacing the screws back into the holes on either side of the unit.



**Step 12**

Reconnect and switch on the power supply to the KwikBoil unit.



PLEASE NOTE: Allow the KwikBoil unit to fill completely for ± 10 minutes before the first initial use.