

# Punto Filo Slim Line Fans

Wall or ceiling mounted fans for intermittent or continuous ventilation of bathrooms, toilets, kitchens or utility rooms.

## Product Features

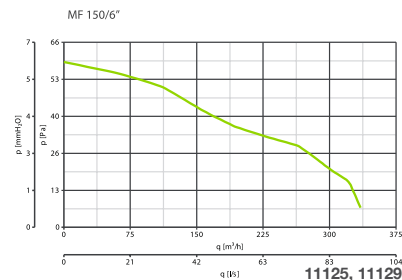
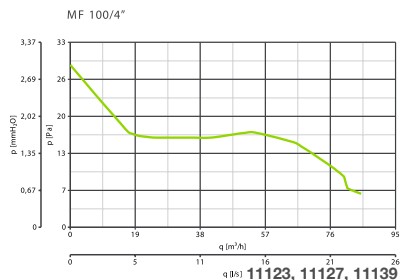
- The front grille of just 17mm and the roundness of the four sides make the fan blend perfectly with the surface it is mounted on
- Available in 2 diameters, 100mm and 150mm
- Wall or ceiling mounted
- Can be ducted up to 4m
- Extremely easy to install and maintain. Fitted with just 1 screw, supplied in the box.
- Virtually silent thanks to a new impeller that permits very limited noise levels with high performance.



- Integral backdraught shutter already installed on the fan that prevents unwanted return air when fan is off.
- Ceiling Gasket available as an accessory
- IPX4 splash proof protection on all models.
- IMQ data label ensures data and performance is third party certified.
- Conforms to international standards: CEI EN 60335-2-80, CEI EN 60529 (code IP) and CEI 107-53/1986.
- Eco-Friendly: Recyclable materials have been used and the "Design for Disassembly" technique has been followed (2002/96/EC-WEE)

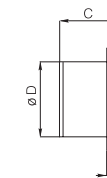
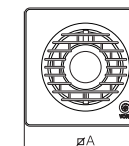
Design: F. Trabucco & Associati

## Pressure/Performance Curves



## Dimensions (mm)

	A	B	C	D	KG
100/4"	159	17	77	98	0,51
150/6"	214	17	96	156	0,97



## Standard 100mm

Code	Punto Filo Range 100mm 85m³/h (24L/S) IPX4 Wall / Ceiling Mounting. Can Be Ducted 4M	Box Qty
11123	100mm Filo Fan. Wall or Ceiling Mounted IPX4	4
11127	100mm Filo Fan c/w <b>TIMER</b> Wall or Ceiling Mounted IPX4	4
11139	100mm Filo Fan C/W Humidity Control System	

## Standard 150mm

Code	Punto Filo Range 150mm 335m³/h (93L/S) IPX4 Wall / Ceiling Mounting. Can Be Ducted 4M	Box Qty
11125	150mm Filo Fan. Wall Or Ceiling Mounted IPX4	2
11129	150mm Filo Fan c/w <b>TIMER</b> Wall or Ceiling Mounted IPX4	2
11176	150mm Filo Fan C/W Humidity Control System	

## Filo Ceiling Gaskets

Code	Punto Filo Range 150mm 335m³/h (93L/S) IPX4	Box Qty
22162	100mm Filo Ceiling Gasket	10
22164	100mm Filo Ceiling Gasket	10



11127



Integral Backdraught Shutter.